



Force 5 North American Championship

Thames Yacht Club,
New London, Connecticut

July 27 – 29, 2017

SAILING INSTRUCTIONS

1 RULES

- 1.1 The regatta will be governed by the rules as defined in The Racing Rules of Sailing.
- 1.2 The prescriptions of the United States national authority (*US SAILING*) national authority will apply.
- 1.3 The Force 5 Class Association Rules will apply.
- 1.4 Section 8.02 of the Force 5 Class Association Rules is changed as follows: A bow line (painter) of not less than ¼ inch in diameter and capable of being extended a minimum of 12 feet from bow the boat, while in use, shall be permanently attached to the mast or bow handle prior to leaving shore and shall remain attached for the duration of the event.

2 NOTICES TO COMPETITORS

- 2.1 The Official Notice Board will be the Yachtscoring webpage for this event.
- 2.2 Information for competitors may be posted at TYC Club House. Lack of information being posted at this location is not grounds for redress.
- 2.3 Notices to competitors will be posted on the Notice Board before 10:00 on the day it will take effect.

3 CHANGES TO SAILING INSTRUCTIONS

- 3.1 Any change to the sailing instructions will be posted on the Notice Board before 10:00 on the day it will take effect.

4 SCHEDULE

- 4.1 Competitors Meeting – Thursday, 09:00 at TYC Club House
- 4.2 Racing will be conducted on Thursday, Friday and Saturday
- 4.3 First Warning for each day of racing is 11:00
- 4.4 Races will not be started after 15:00 on Saturday
- 4.5 Awards will be on Saturday at 17:00

5 RACING AREA

- 5.1 See Attachment A for primary racing area. Courses will be in the vicinity of Vixen Ledge and/or the mouth of the Thames River off New London and Groton.

6 THE COURSES

- 6.1 Diagrams in Attachment B show the courses, including the approximate angles between legs, the order in which marks are to be passed, and the side on which each mark is to be left.

- 6.2 No later than the warning signal, the RC signal boat will display the approximate compass bearing of the first leg.

7 MARKS

- 7.1 Starting Mark, Finishing Mark, Mark 1 (Windward) and Mark 2 (Gybe) shall be ORANGE inflatables.
- 7.2 Marks 2s, 2p (Gate) and Mark 3 (Leeward) shall be YELLOW inflatables.
- 7.3 If used, Mark 1a (Offset) will be defined at Competitors meeting.

8 THE START

- 8.1 Races will be started by using RRS 26.
- 8.2 The starting line shall be between an ORANGE flag on the RC signal boat at the starboard end and the Starting Mark at the port end.
- 8.3 A boat starting later than 5 minutes after her starting signal will be scored Did Not Start (DNS) without a hearing. This changes rule A4.

9 THE FINISH

- 9.1 The finish line will be between the ORANGE flag on the RC signal boat to port and a nearby inflatable mark to starboard (as seen from the course side of the finish line).

10 PROTESTS AND REQUESTS FOR REDRESS

- 10.1 Protest forms are available at the TYC Club House. Protests and requests for redress or reopening shall be delivered to the Race Chairman or their designate within the appropriate time limit.
- 10.2 The protest time limit is 1 hour after the Protester returns to shore after racing has concluded each day.
- 10.3 Parties will be notified by the Race Chairman as to the time and location of the protest hearings as soon as possible after filing has been submitted.

11 SCORING

- 11.1 The Low Point scoring system of RRS Appendix A will apply.
- 11.2 One completed race constitutes a series.
- 11.3 One (1) throw-out will be allowed if more than six (6) races are completed. (This changes Appendix A.)

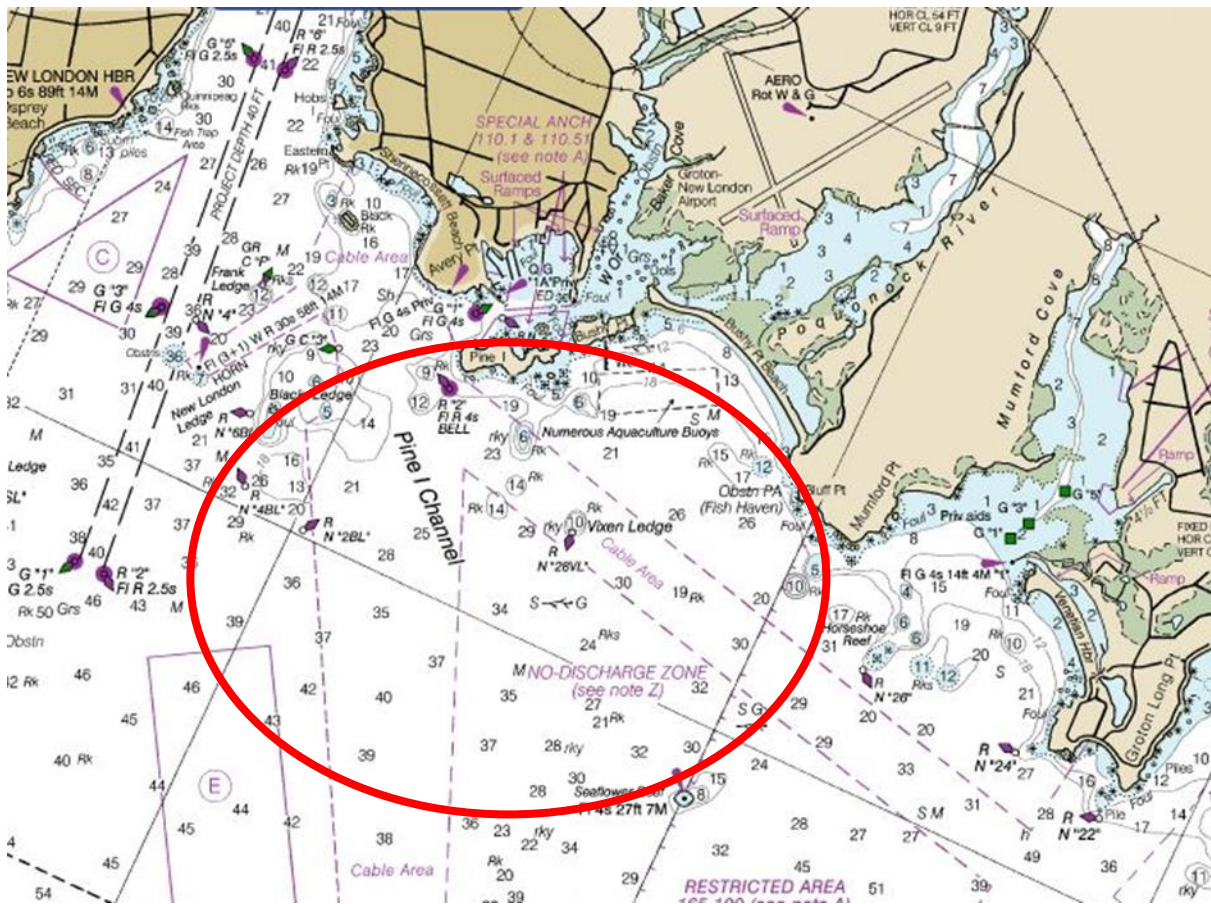
12 SAFETY REGULATIONS

- 12.1 Life jackets are recommended for all racers.
- 12.2 A boat that retires from a race shall notify the race committee as soon as possible.

13 PRIZES

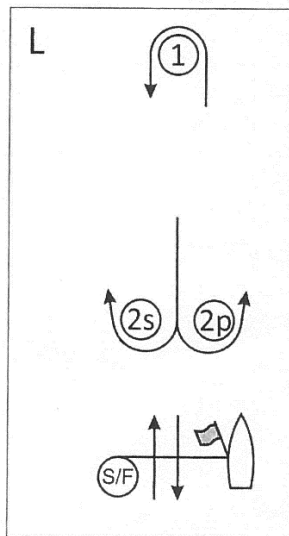
- 13.1 The top finisher for the event will be recognized as the 2017 Force 5 North American Champion.
- 13.2 Awards will be made for 2nd, 3rd, 4th & 5th places.
- 13.3 Award will be made to the top Junior (under 18 years of age) participant.
- 13.4 Award will be made to top Woman Participant.
- 13.5 Award will be made to top Senior participant (65 years of age and over)
- 13.6 Award to top "Challenger Division" participant.
- 13.7 Other Awards maybe given at the discretion of the Race Chairman.

Attachment "A" Racing Area

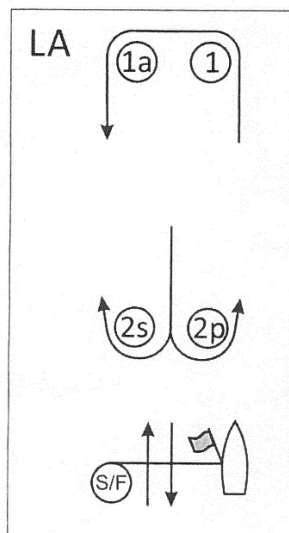


Attachment "B"

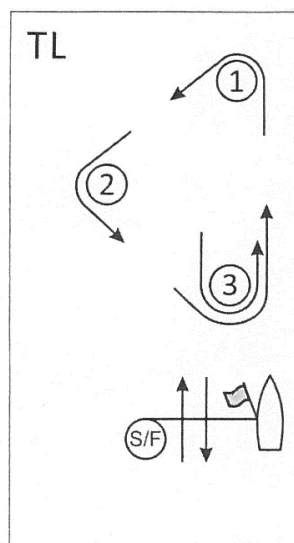
COURSE DIAGRAMS



Course L – Windward/Leeward, Leeward Finish	
Signal	Mark Rounding Order
L2	Start – 1 – 2s/2p – 1 – Finish
L3	Start – 1 – 2s/2p – 1 – 2s/2p – 1 – Finish
L4	Start – 1 – 2s/2p – 1 – 2s/2p – 1 – 2s/2p – 1 – Finish



Course LA – Windward/Leeward with Offset Mark, Leeward Finish	
Signal	Mark Rounding Order
LA2	Start – 1 – 1a – 2s/2p – 1 – 1a – Finish
LA3	Start – 1 – 1a – 2s/2p – 1 – 1a – 2s/2p – 1 – 1a – Finish
LA4	Start – 1 – 1a – 2s/2p – 1 – 1a – 2s/2p – 1 – 1a – 2s/2p – 1 – 1a – Finish



Course TL – Triangle, Leeward Finish	
Signal	Mark Rounding Order
TL2	Start – 1 – 2 – 3 – 1 – Finish
TL3	Start – 1 – 2 – 3 – 1 – 3 – 1 – Finish
TL4	Start – 1 – 2 – 3 – 1 – 3 – 1 – 3 – 1 – 3 – 1 – Finish